



ADDENDUM #2

PROJECT: Firebaugh Center Surveillance Cameras REBID

Notice to Bidders on the Above Project:

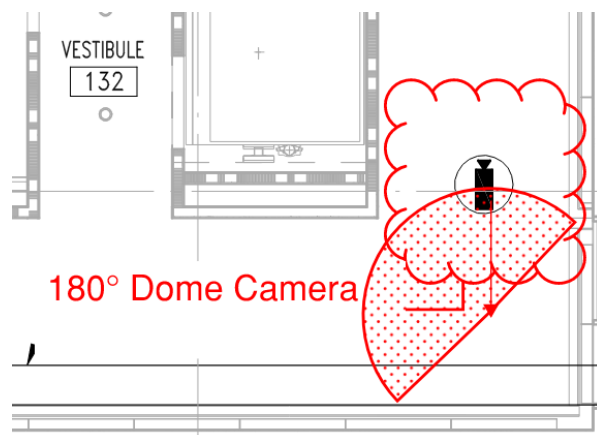
This addendum forms a part of the contract documents and modifies the original bidding documents as noted below. Please acknowledge the receipt of this addendum in your proposal submission. Failure to do so may subject the bidder to disqualification.

This addendum consists of:

[Changes to the Project Scope, Scope of Work \(highlighted additions or adjustments\):](#)

Camera Requirements:

- All cameras must be fully installed with supported mounting brackets and hardware and configured to be fully integrated and functional with the Salient server.
- All cameras must be fully supported by Salient version 6.1.0. A compatible camera listing can be found here: <https://support.salientsys.com/knowledgebase/supported-camera/>
- All cameras must support a minimum of 4MP resolution.
- 17 cameras need CAT6A cabling to be run and terminated and labeled back to the MDF for floor 1; 2nd floor intermediate distribution frame (IDF) for floor 2; and either MDF or M&O building IDF for exterior cameras.
- The 180-degree dome camera in the SE corner adjacent to vestibule 132 in the first-floor hallway will need to be mounted approximately 15ft away from the network jack location to the center of the hallway to obtain the indicated view. This cabling extension will need to be pulled above the ceiling in the crawl space (not surface-mounted).



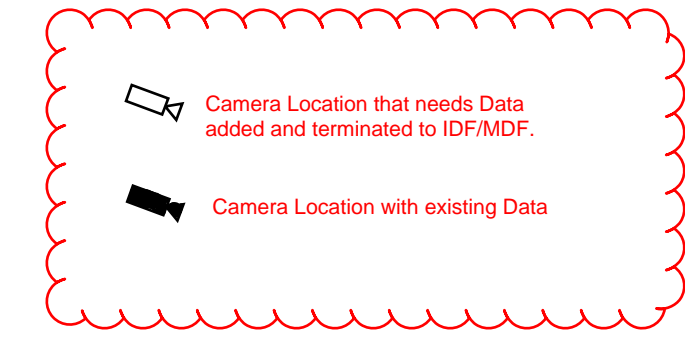
- Conduit pathway exists for all exterior locations, which are to be mounted on existing light poles.
 - Floor 1: 3 camera needs networking added
 - Floor 2: 8 cameras need networking added
 - Outdoor: 6 cameras need networking added
 - All other cameras have networking in place.

Attachments to this Document:

Camera RFQ Plans – Addendum 2.pdf

GENERAL NOTES:

- A. CONDUIT ARE SHOWN AS DESIGN INTENT. PLANS SHOWS CONDUIT SIZES, QUANTITIES ORIGIN AND TERMINATION LOCATION. ELECTRICAL CONTRACTOR SHALL COORDINATE THE EXACT ROUTE WITH OTHER TRADES AND PROVIDE PULL-BOXES ACCORDINGLY NEC.
- B. THERE SHALL BE NO MORE THAN EQUIVALENT OF TWO 90 DEGREE BENDS (TOTAL 180 DEGREES) IN CONTINUOUS CONDUIT RUN. MAXIMUM CONTINUOUS CONDUIT RUN SHALL NOT EXCEED 100 FEET.
- C. PULL AND JUNCTION BOXES SHALL BE PROVIDED ACCORDINGLY NEC, ARTICLE 314.
- D. EMT CONDUIT SHALL BE INSTALLED AS COMPLETE SYSTEM IN ACCORDANCE WITH ARTICLE 300.18 AND SHALL BE SECURELY FASTENED IN PLACE AND SUPPORTED IN ACCORDANCE NEC ARTICLE 358.30(A AND B).
- E. ALL LOCATIONS PASSING THROUGH A FIRE OR A SMOKE BARRIER SYSTEM MUST BE FIRE STOPPED USING APPROVED (UL CLASSIFIED) FIRE STOP. MATERIAL INSTALLED PER THE MANUFACTURER'S INSTRUCTIONS. THIS SHALL INCLUDE WALL, FLOOR, OR CEILING PENETRATIONS FOR CONDUIT, SLEEVES, OR CABLE.
- F. ALL WIRELESS ACCESS POINTS CABLES SHALL BE PROVIDED AND INSTALLED BY CABLING CONTRACTOR. CONDUIT AND BACKBOXES SHALL BE PROVIDED AND INSTALLED BY ELECTRICAL CONTRACTOR. WIRELESS ACCESS POINTS DEVICES SHALL BE PROVIDED AND CONFIGURED BY OWNER. PHYSICAL INSTALLATION BY CABLING CONTRACTOR.
- G. ALL SPACES THAT ARE FULL HEIGHTS WALLS. ELECTRICAL CONTRACTOR SHALL PROVIDE CONDUIT SLEEVES AS NEEDED FOR CABLE CONVEYANCE FROM EACH SPACE TO NEAREST CABLE TRAY OR ACCESSIBLE CEILING SPACE. CONDUIT FILL RATIO SHALL NOT EXCEED 40%.



SHEET NOTES:

- 1. GENERAL CONTRACTOR SHALL PROVIDE AND INSTALL 2'X2' ACCESS CEILING PANEL FOR CABLE CONVEYANCE AND ACCESSIBILITY. COORDINATE OPENING WITH ARCHITECT PRIOR CUTTING TO CEILING.
- 2. ELECTRICAL CONTRACTOR SHALL PROVIDE AND INSTALL (2) 2" CONDUITS.
- 3. COMMUNICATION CONTRACTOR SHALL PROVIDE AND INSTALL 18" X 4" BASKET TRAY.

IDENTIFICATION STAMP
 DIV. OF THE STATE ARCHITECT
 APP. 02-117216 INC.
 REVIEWED FOR
 SS FLS ACS
 DATE: 08/22/2019

155 S. Fair Oaks, 2nd Floor,
 Pasadena | California 91105
 1 626 666 6906
 1 626 666 3940
 www.cannondesign.com



COPYRIGHT 2018
 No part of the contents of this document may be reproduced or transmitted in any form or by any means without the written permission of CannonDesign.

INTEGRAL GROUP
 15780 Ventura Blvd S. 1902, Los Angeles CA USA 91436
 323.825.9555 Telephone
 E-Mail: info@integralgroup.com
 www.integralgroup.com

WEST HILLS COMMUNITY COLLEGE DISTRICT



WHCCD NORTH DISTRICT CENTER

WEST HILLS COMMUNITY COLLEGE DISTRICT

PROJECT NUMBER:
80000-013
DSA # 02-117216

DRAWN: _____ Author
 CHECKED: _____ Checker
 ISSUE/REVISION:
 09-26-2019 50% CONSTRUCTION DOCUMENTS
 07-10-2019 DSA RESUBMITTAL
 08-16-2019 DSA SUBMITTAL

DSA BACKCHECK SUBMITTAL
07-10-2019

TECHNOLOGY LEVEL 1 OVERALL REFLECTED CEILING PLAN

T201

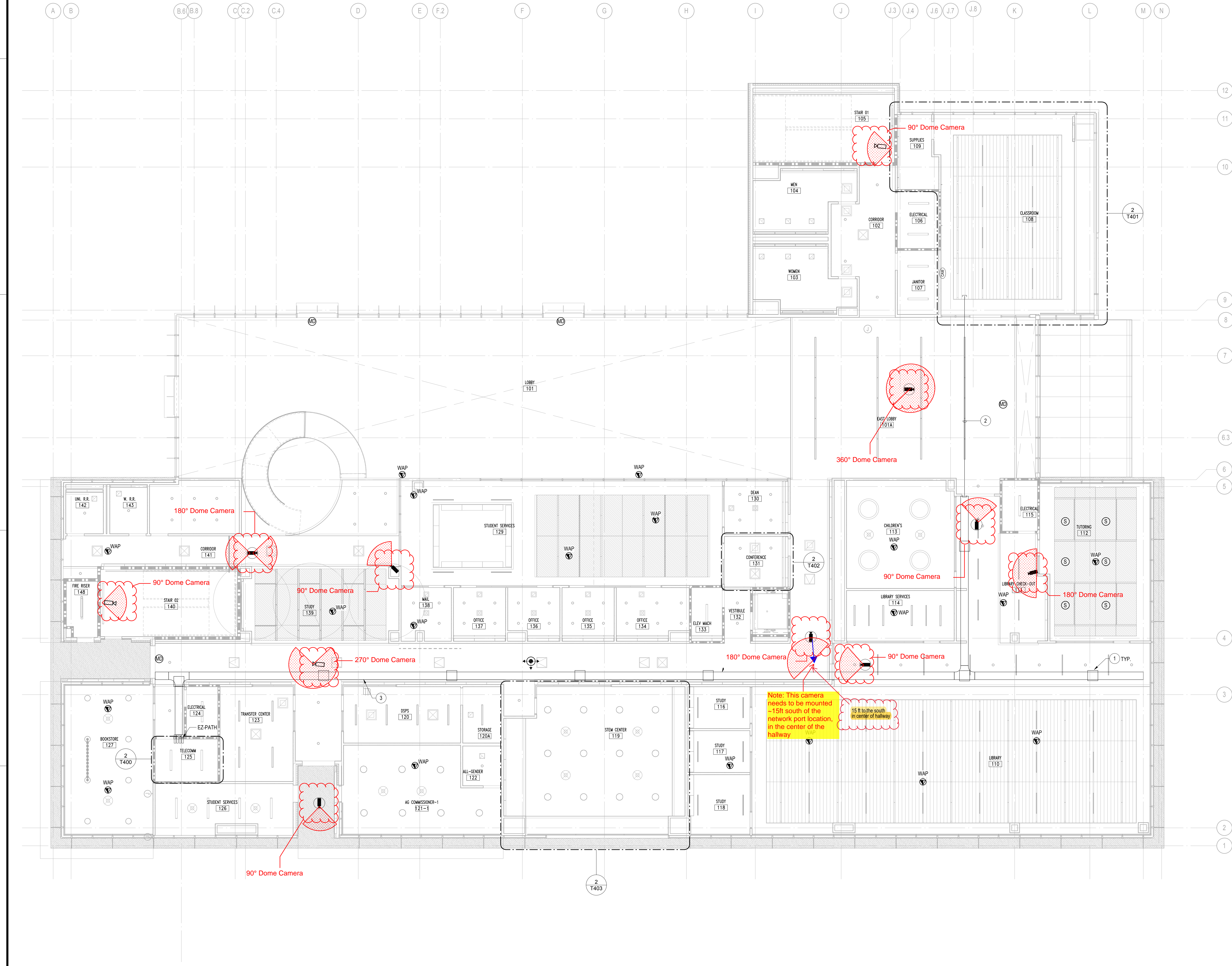
REFLECTED CEILING PLAN - LEVEL 1

1/8" = 1'-0"

1

C:\Users\mraner\Documents\WHCCD\IND\LG_MEP_Annals\T201.rvt

T201 TECHNOLOGY LEVEL 1 OVERALL REFLECTED CEILING PLAN 08/22/2019



GENERAL NOTES:

- A. CONDUIT ARE SHOWN AS DESIGN INTENT. PLANS SHOWS CONDUIT SIZES, QUANTITIES ORIGIN AND TERMINATION LOCATION. ELECTRICAL CONTRACTOR SHALL COORDINATE THE EXACT ROUTE WITH OTHER TRADES AND PROVIDE PULL-BOXES ACCORDINGLY NEC.
- B. THERE SHALL BE NO MORE THAN EQUIVALENT OF TWO 90 DEGREE BENDS (TOTAL 180 DEGREES) IN CONTINUOUS CONDUIT RUN. MAXIMUM CONTINUOUS CONDUIT RUN SHALL NOT EXCEED 100 FEET.
- C. PULL AND JUNCTION BOXES SHALL BE PROVIDED ACCORDINGLY NEC, ARTICLE 314.
- D. EMT CONDUIT SHALL BE INSTALLED AS COMPLETE SYSTEM IN ACCORDANCE WITH ARTICLE 300.18 AND SHALL BE SECURELY FASTENED IN PLACE AND SUPPORTED IN ACCORDANCE NEC ARTICLE 358.30(A AND B).
- E. ALL LOCATIONS PASSING THROUGH A FIRE OR A SMOKE BARRIER SYSTEM MUST BE FIRE STOPPED USING APPROVED (UL CLASSIFIED) FIRE STOP. MATERIAL INSTALLED PER THE MANUFACTURER'S INSTRUCTIONS. THIS SHALL INCLUDE WALL, FLOOR, OR CEILING PENETRATIONS FOR CONDUIT, SLEEVES, OR CABLE.
- F. ALL WIRELESS ACCESS POINTS CABLES SHALL BE PROVIDED AND INSTALLED BY CABLING CONTRACTOR. CONDUIT AND BACKBOXES SHALL BE PROVIDED AND INSTALLED BY ELECTRICAL CONTRACTOR. WIRELESS ACCESS POINTS DEVICES SHALL BE PROVIDED AND CONFIGURED BY OWNER. PHYSICAL INSTALLATION BY CABLING CONTRACTOR.
- G. ALL SPACES THAT ARE FULL HEIGHTS WALLS. ELECTRICAL CONTRACTOR SHALL PROVIDE CONDUIT SLEEVES AS NEEDED FOR CABLE CONVEYANCE FROM EACH SPACE TO NEAREST CABLE TRAY OR ACCESSIBLE CEILING SPACE. CONDUIT FILL RATIO SHALL NOT EXCEED 40%.



SHEET NOTES:

- 1. GENERAL CONTRACTOR SHALL PROVIDE AND INSTALL 2'X2' ACCESS CEILING PANEL FOR CABLE CONVEYANCE AND ACCESSIBILITY. COORDINATE OPENING WITH ARCHITECT PRIOR CUTTING TO CEILING.
- 2. ELECTRICAL CONTRACTOR SHALL PROVIDE AND INSTALL (2) 2" CONDUITS.
- 3. COMMUNICATION CONTRACTOR SHALL PROVIDE AND INSTALL 18" X 4" BASKET TRAY.

IDENTIFICATION STAMP
 DIV. OF THE STATE ARCHITECT
 APP. 02-117216 INC.
 REVIEWED FOR
 SS FLS ACS
 DATE: 08/22/2019

155 S. Fair Oaks, 2nd Floor,
 Pasadena | California 91105
 1 626 666 6906
 1 626 666 3940
 www.cannondesign.com



COPYRIGHT 2018
 No part of the contents of this document may be reproduced or transmitted in any form or by any means without the written permission of CannonDesign.

INTEGRAL GROUP
 15780 Ventura Blvd S 1902, Los Angeles CA USA 91436
 323.825.9555 Telephone
 E-Mail: info@integralgroup.com
 www.integralgroup.com

WEST HILLS COMMUNITY COLLEGE DISTRICT



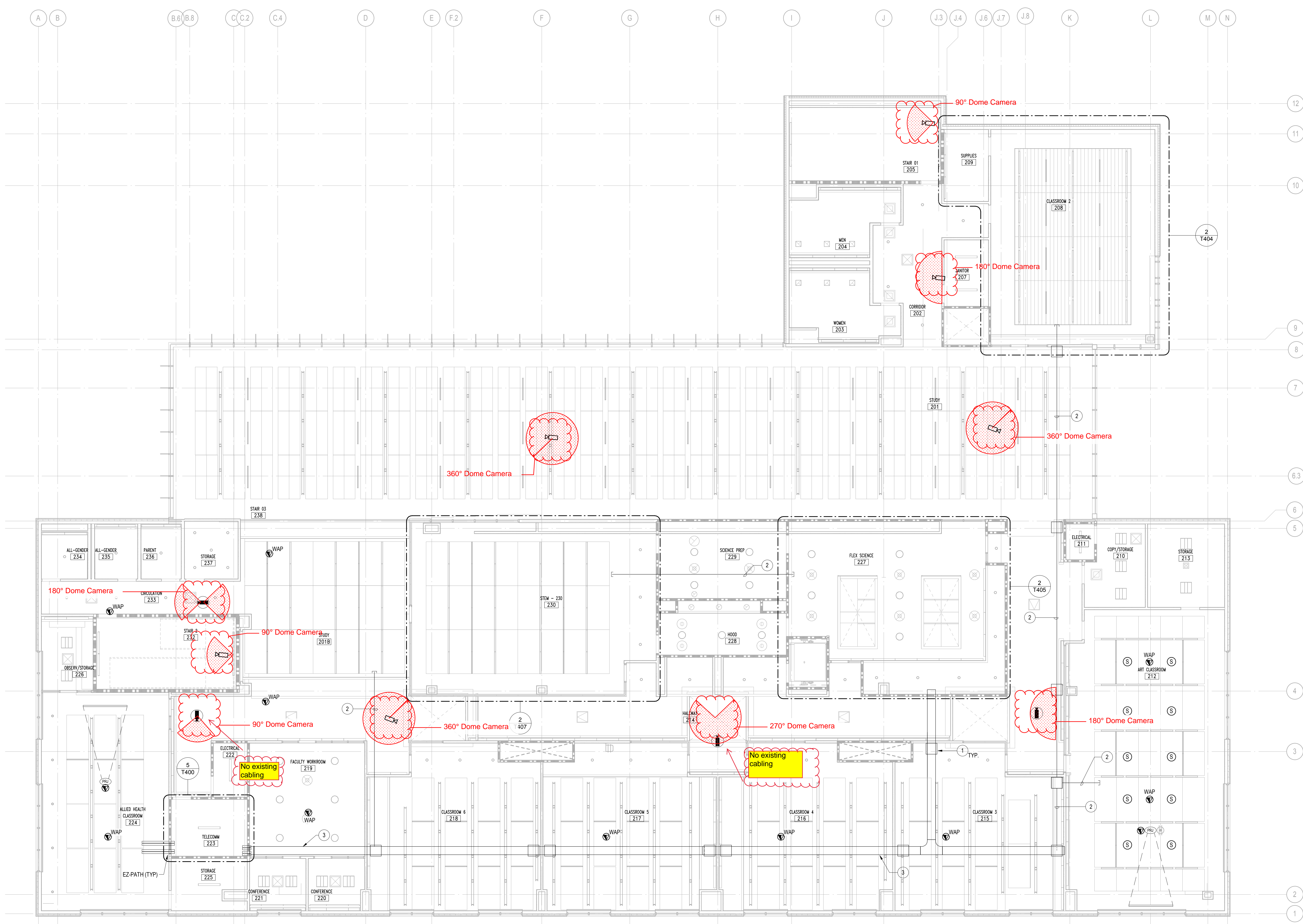
WHCCD NORTH DISTRICT CENTER
 A PROJECT FOR:
WEST HILLS COMMUNITY COLLEGE DISTRICT

PROJECT NUMBER:
80000-013
DSA # 02-117216
 DRAWN: Author
 CHECKED: Checker
 ISSUE/REVISION:
 09-26-2019 50% CONSTRUCTION DOCUMENTS
 07-10-2019 DSA SUBMITTAL
 08-16-2019 DSA SUBMITTAL

DSA BACKCHECK SUBMITTAL
 07-10-2019

TECHNOLOGY LEVEL 2
 OVERALL REFLECTED
 CEILING PLAN

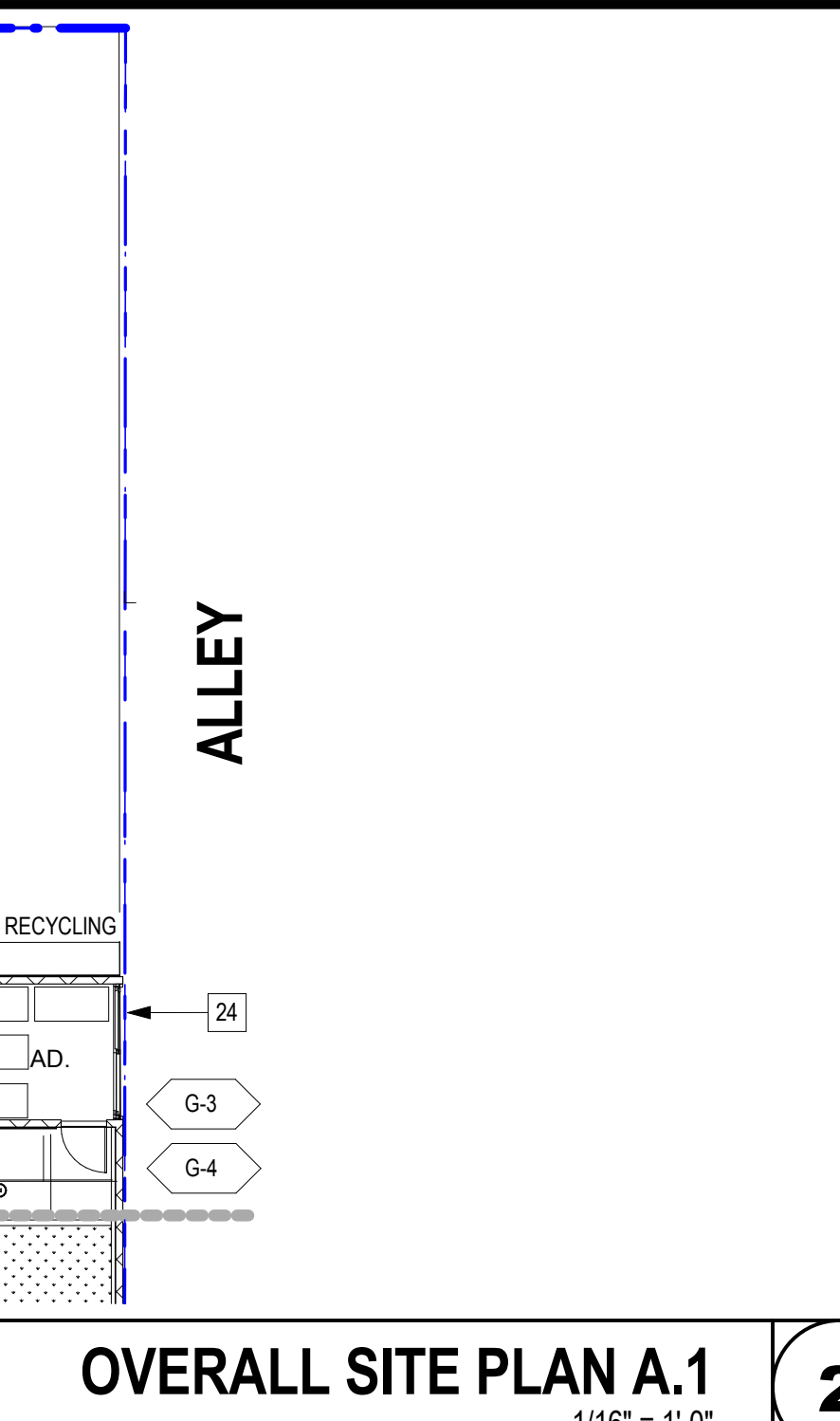
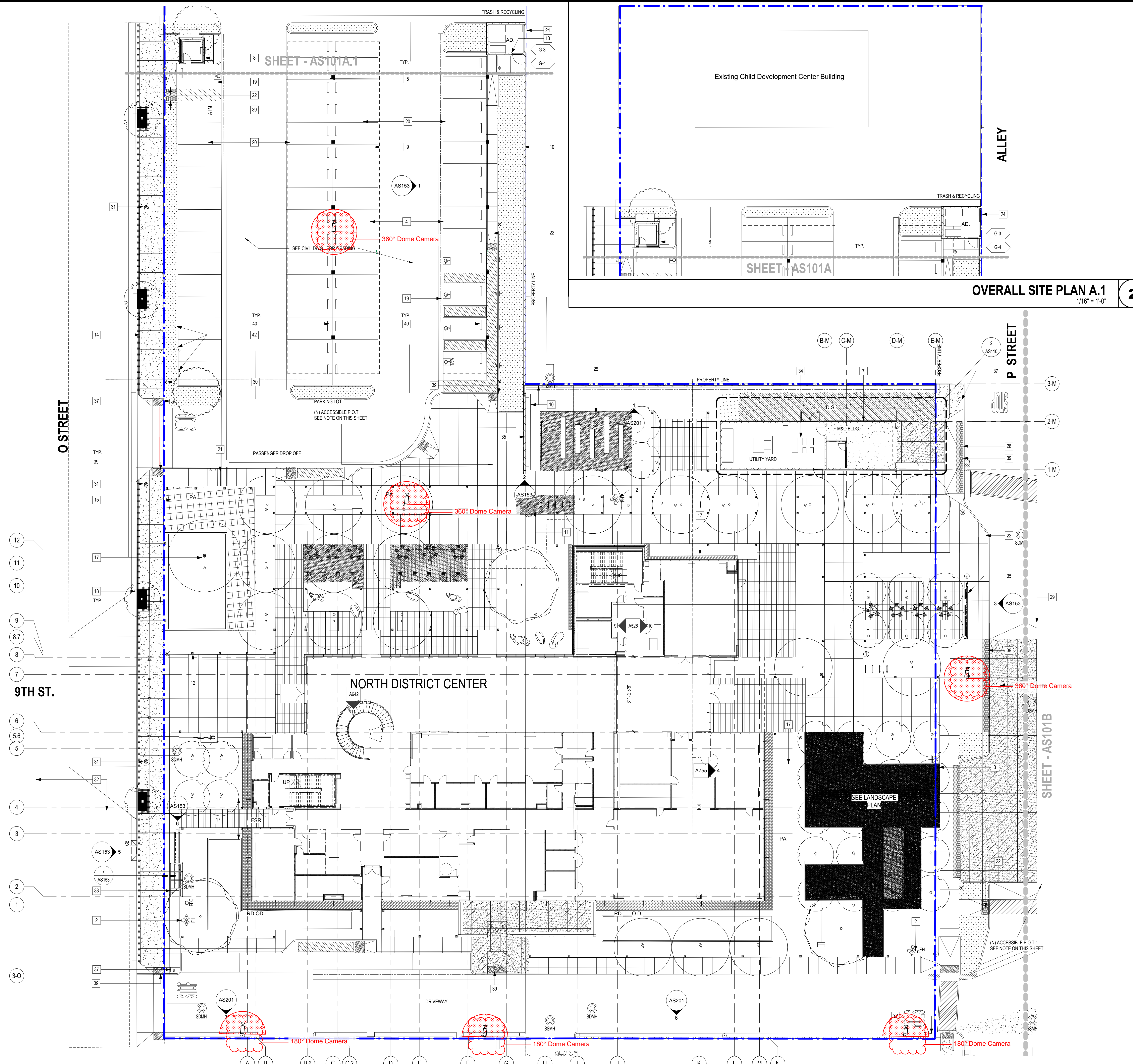
T202



REFLECTED CEILING PLAN - LEVEL 2
 1/8" = 1'-0"

C:\Users\mward\Documents\WHCCD\IND\LG_MEP_mward\SLV.rvt
 T202 TECHNOLOGY LEVEL 2 OVERALL REFLECTED CEILING PLAN 08/16/19 PM

AS101A ENLARGED PARTIAL SITE PLAN A
 8/15/2019 2:01:44 PM
 C:\Users\jgarcia\Documents\WHCCD\NDC Center\A17-80000-013_1\jgarcia\EW\HC\A1



OVERALL SITE PLAN A.1
 1/16" = 1'-0" **2**

OVERALL SITE PLAN A
 1/16" = 1'-0" **1**

SITE PLAN GENERAL NOTES

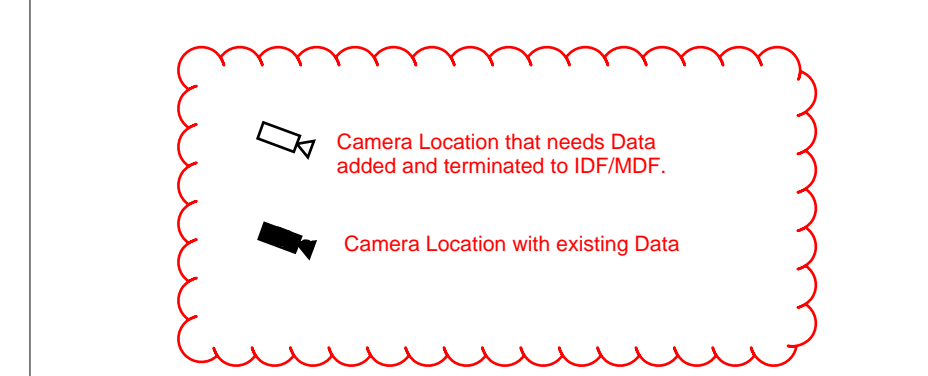
- SEE CIVIL AND LANDSCAPE DRAWINGS FOR ADDITIONAL SCOPE OF WORK.
- SEE LANDSCAPE DRAWINGS FOR PLANTING AREA INFO. AND TREE INFORMATION.
- SEE STRUCTURAL DRAWINGS FOR CONCRETE RETAINING WALLS, CONCRETE GUARDRAIL AND SITE RAMP AND STAIR INFO.
- SEE ELECTRICAL DRAWINGS FOR SITE LIGHTING INFO.
- SEE PLUMBING DRAWINGS FOR ADDITIONAL SCOPE OF WORK.
- THE CROSS SLOPE OF WALKING SURFACES SHALL BE NO STEEPER THAN 2%.

SITE PLAN LEGEND

- SEE ENLARGED SITE PLAN SHEET AS101A & AS101B FOR ADDITIONAL FEATURES.
- FH FIRE HYDRANT PER CIVIL DWGS. SEE C006
 - D.S. DOWNSPOUT
 - R.D. ROOF DRAIN AND OVERFLOW DRAIN - SEE PLUMBING
 - AD AREA DRAIN
 - PA PLANTER AREA - SEE LANDSCAPE SHEET 2-LP101
 - FD FLOOR DRAIN - SEE PLUMBING DWGS.
 - FSR FIRE SPRINKLER RISER PER PLUMBING DWGS.
 - G-1 GATE TYPE PER SCHEDULE. SEE 6AS152
 - PROPERTY LINE
 - PATH OF TRAVEL (POT)

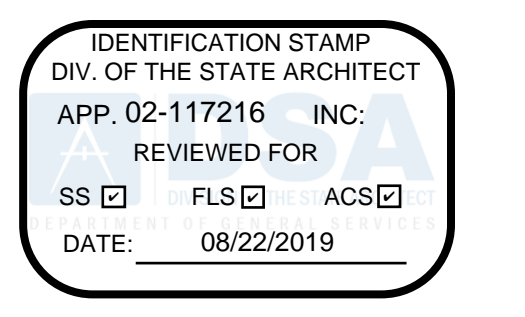
SITE PLAN KEYNOTES

Keyed Number	Keyed Description
1	(E) FIRE HYDRANT
2	(N) FIRE HYDRANT
3	(N) BIPOD DROP OFF
4	FUTURE PHOTOVOLTAIC STRUCTURE NIS
5	COL. FOR FUTURE PHOTOVOLTAIC STRUCTURE NIS
7	(N) MAINTENANCE AND OPERATIONS STORAGE
8	(N) ATM, ON CONCRETE PAD W/ SIDEWALK ACCESS
9	(N) PHOTOVOLTAIC STRUCTURE
10	(N) CMU WALL
11	(N) BIKE RACK
12	(N) FLAG POLE
13	(N) TRASH ENCLOSURE
14	(N) BUS SHELTER
15	(N) CAMPUS MONUMENT SIGN
16	(N) OUTDOOR CLASSROOM NOT IN SCOPE NOT PART OF SUBMITTAL
17	(N) BIORETENTION BASIN SEE CIVIL
18	(N) TREE SEE LANDSCAPE DRAWINGS
19	(N) ACCESSIBLE PARKING
20	(N) PARKING STRIPING
21	(N) TOW AWAY EXIT SIGN, SEE DETAIL
22	(N) ACCESSIBLE RAMP - GRADING PER CIVIL DWGS.
23	(N) BIORETENTION BASIN SEE CIVIL
24	(N) GATE PER GATE SCHEDULE - SEE AS152 FOR GATE SCHEDULE
25	(N) CONCRETE BENCH SEE LANDSCAPE DWGS.
26	(N) LIGHT POLE
27	(N) CANOPY NOT IN SCOPE NOT PART OF SUBMITTAL
28	(N) DRIVEWAY AND CURBOUT SEE CIVIL DWGS.
29	(N) SPEED TABLE REFER TO CIVIL DWGS.
30	(N) LIGHT POLE
31	(N) STREET LIGHTS CONTRACTOR RESPONSIBLE FOR INSTALLING PER CITY REQUIREMENTS AND COORDINATING WITH CITY AGENCIES AND LOCAL UTILITIES.
32	RECONFIGURED STREET CURBS AND GUTTERS SEE CIVIL DWGS.
33	(N) BUS STOP CONTRACTOR RESPONSIBLE FOR INSTALLING PER FRESNO COUNTY RURAL TRANSIT AUTHORITY
34	(N) TRANSFORMER
35	(N) CAMPUS MONUMENT SIGN SEE SHEET AS153
36	CURB PAINTED TO DENOTE 20MIN PARKING SEE CIVIL
37	CURBS TOP AND SIDE TO BE PAINTED RED AND THE WORKS FIRE LANE STENCILLED ON TOP AND SIDE MAX INTERNAL 50'-0" LETTERS SHALL BE 2" IN HEIGHT WITH A MINIMUM 3/4" IN STROKE
38	(N) STOP SIGN SEE SHEET AS151
39	(N) DETECTABLE WARNING TRUNCATED DOMES SEE SHEET AS151B
40	(N) WHEEL STOP SEE AS151A
41	WALL WASH LIGHT MOUNTED TO CMU WALL
42	(N) FEV SIGN SEE SHEET AS151C

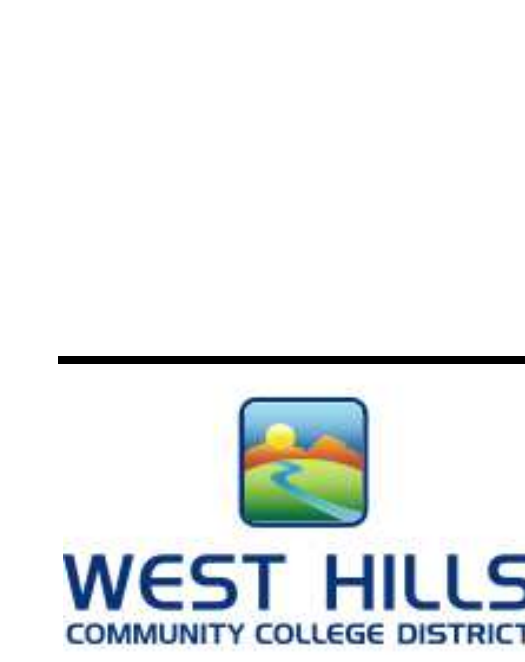
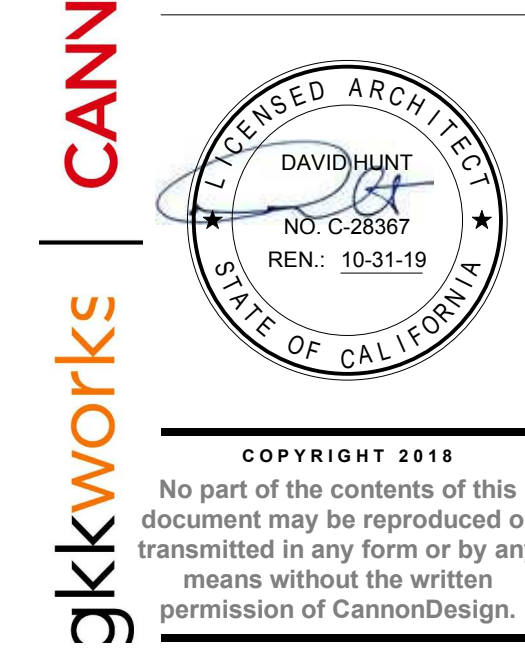


SITE LEGEND

- PROPERTY LINE
- ASSUMED PROPERTY LINE
- GATE/DOOR
- ACCESSIBLE EGRESS PATH TO SAFE DISPERSAL AREA
- EMERGENCY ASSEMBLY AREA / SAFE DISPERSAL AREA CAPACITY = 58F PER OCCUPANT PER CBC 1027.5
- FIRE ACCESS LANE PROVIDE NO PARKING - FIRE LANE SIGN TO COMPLY WITH CA VEHICLE CODE 22500.1
- 150' FIRE HOSE PULL
- FIRE HYDRANT
- PH PANIC HARDWARE, SEE DOOR SCHEDULE
- FIRE LANE SIGN SEE SHEET AS151
- LIGHT FIXTURE BOLLARD SITE LIGHTING SEE SHEET E100
- LIGHT FIXTURE IN GROUND SITE LIGHTING SEE SHEET E100
- LIGHT FIXTURE POLE LIGHT HEIGHT VARIES SEE SITE LIGHTING SHEET E100



CANNONDESIGN
 155 S. Fair Oaks, 2nd Floor,
 Pasadena | California 91105
 t 626.666.6906
 f 626.666.3940
 www.cannondesign.com



WHCCD NORTH DISTRICT CENTER
 1151 9TH ST. FRESNO, CA 93822
 A PROJECT FOR:
WEST HILLS COMMUNITY COLLEGE DISTRICT

PROJECT NUMBER:
80000-013
DSA # 02-117216
 DRAWN: _____ Author
 CHECKED: _____ Checker
 ISSUE/REVISION:
 8-16-2019 DSA SUBMITTAL

DSA SUBMITTAL
 08-16-2019

ENLARGED PARTIAL SITE
 PLAN A

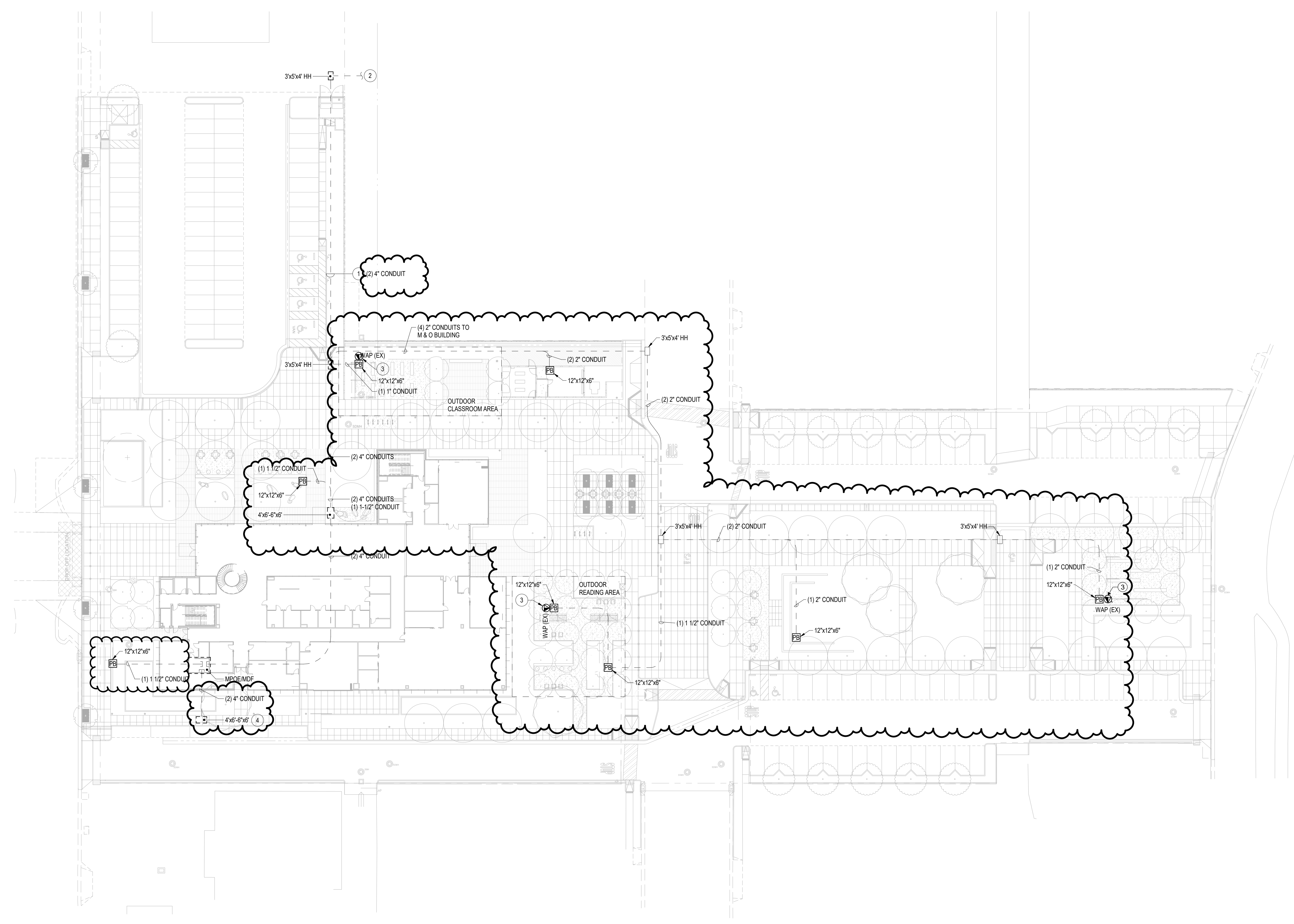
AS101A

GENERAL NOTES:

- A. CONDUIT ROUTES ARE SHOWN AS DESIGN INTENT AND ARE DIAGRAMMATIC IN NATURE. ELECTRICAL CONTRACTOR SHALL COORDINATE THE EXACT ROUTE IN FIELD WITH SITE CONDITIONS, CIVIL DRAWINGS AND OTHER TRADES.
- B. SERVICE UTILITIES (VOICE, DATA/INTERNET AND CATV) WAS NOT SELECTED PRIOR TO THE DEVELOPMENT OF THIS DOCUMENTS. SERVICE PROVIDER TO BE SELECTED BY OWNER. EXACT LOCATION OF MAINTENANCE HOLE (OR PULL BOX) IS SUBJECT TO CHANGE, DEPENDING ON SERVICE PROVIDER CONNECTIONS FROM THE STREET. GENERAL CONTRACTOR SHALL COORDINATE WITH OWNER AND CIVIL UTILITY PLANS PRIOR INSTALLATION. LOCATION SHOWN TO CAPTURE DESIGN INTENT.
- C. CONDUIT SHALL RUN IN THE MOST DIRECT ROUTE POSSIBLE WITH NO MORE THAN TWO 90 DEGREE BENDS AT ANY DIMENSIONAL PLANE BETWEEN PULL POINTS OR PULL BOXES (PB).
- D. AN ACCESSIBLE PULL BOX MUST BE ADDED TO A CONDUIT RUN IF IT CONTAINS MORE THAN THE EQUIVALENT OF TWO 90 DEGREE TURNS IN ANY DIMENSIONAL PLANE.
- E. THERE SHALL BE NO CONTINUOUS CONDUIT SECTIONS LONGER THAN 98 FT. FOR RUNS THAT TOTAL MORE THAN 98 FT IN LENGTH. INSERT PULL POINTS OR PULL BOXES SO THAT NO SEGMENT BETWEEN POINTS EXCEEDS THE 98 FT. LIMIT.
- F. ALL CONDUITS OR CONDUITS STUB-UPS SHALL HAVE A MINIMUM BEND RADIUS 8 TIMES THE DIAMETER OF THE CONDUIT. IF FIBER OPTIC CABLE IS RUN IN THE CONDUIT OR STUB-UP THE BEND RADIUS SHALL BE INCREASED TO 10 TIMES THE DIAMETER OF THE CONDUIT.
- G. ALL CONDUITS THAT ARE 2" OR LESS IN DIAMETER SHOULD HAVE BEND RADIUS OF 6 TIMES INTERNAL DIAMETER OF THE CONDUIT. IF THE CONDUIT IS LARGER THAN 2" SHOULD HAVE BEND RADIUS OF 10 TIMES INTERNAL DIAMETER OF THE CONDUIT.
- H. GENERAL CONTRACTOR SHALL PROVIDE ALL CONDUITS WITH A PLASTIC OR NYLON LINE (ALSO CALLED A FISH TAPE OR PULL CORD) WITH A MINIMUM TEST RATING OF 200 LB.
- I. PULL AND JUNCTION BOXES SHALL BE PROVIDED ACCORDINGLY NEC ARTICLE 314.
- J. EMT CONDUIT SHALL BE INSTALLED AS COMPLETE SYSTEM IN ACCORDANCE WITH ARTICLE 300.18 AND SHALL BE SECURELY FASTENED IN PLACE AND SUPPORTED IN ACCORDANCE WITH ARTICLE 305.3(A) AND (B).
- K. CONTRACTOR SHALL COORDINATE ALL UNDERGROUND CONDUITS WITH CIVIL AND PSOMAS WHCCD NDC EXPANSION WET AND DRY UTILITY EXHIBIT. INTEGRAL DRAWINGS ARE DIAGRAMMATIC IN NATURE TO CONVEY DESIGN INTENT. ALL LINES BEYOND 5' FROM THE BUILDING SHOULD BE COORDINATED WITH PSOMAS WHCCD NDC EXPANSION WET AND DRY UTILITY PLAN.

SHEET NOTES:

- 1. ELECTRICAL CONTRACTOR SHALL PROVIDE AND INSTALL (4)" CONDUITS.
- 2. ELECTRICAL CONTRACTOR SHALL PROVIDE AND INSTALL (2)" CONDUIT STUB-UP 5' FROM PULLBOX FOR FUTURE CONNECTION WITH SERVICE PROVIDER. SERVICE PROVIDER TO BE SELECTED BY OWNER.
- 3. GENERAL CONTRACTOR SHALL COORDINATE MOUNTING LOCATION OF EXTERIOR WIRELESS ACCESS POINT WITH ARCHITECT. WIRELESS ACCESS POINT SHALL BE MOUNTED AT BETWEEN 5'-20" ABOVE FINISH GROUND.
- 4. CONTRACTOR SHALL COORDINATE ALL LINES BEYOND 5' FROM THE BUILDING WITH PSOMAS WHCCD NDC EXPANSION WET AND DRY UTILITY PLAN.



CANNONDESIGN
 155 S. Fair Oaks, 2nd Floor,
 Pasadena | California 91105
 1 626 666 6906
 1 626 666 3940
 www.cannondesign.com

INTEGRAL GROUP
 15780 Ventura Blvd S 1902, Los Angeles CA USA 91436
 323 825 9555 Telephone
 E-Mail: info@integralgroup.com
 www.integralgroup.com

WEST HILLS COMMUNITY COLLEGE DISTRICT

WHCCD NORTH DISTRICT CENTER
 A PROJECT FOR:
WEST HILLS COMMUNITY COLLEGE DISTRICT

PROJECT NUMBER:
80000-013
DSA # 02-117216

DRAWN:	Author
CHECKED:	Checker
ISSUE/REVISION:	
09-26-2019	50% CONSTRUCTION DOCUMENTS
07-10-2019	DSA SUBMITTAL
08-16-2019	DSA SUBMITTAL
11/4/2019	RFI #6
09/23/2020	ASI #9

ASI #29
 09-23-2020

TECHNOLOGY OVERALL SITE PLAN

T100

C:\Users\arand\Documents\WHCCD NDC_LG_MEP_arand\SIW_Lvt
 9/23/2020 3:13:18 PM
 T100 TECHNOLOGY OVERALL SITE PLAN